

INSET



**YOUR COMPREHENSIVE
SOLUTION FOR
INDUSTRIAL NEEDS**

Inset is a leading provider of industrial products and services, offering a wide range of solutions to meet the diverse needs of your industry. With a commitment to quality, reliability, and customer satisfaction, Inset is your trusted partner for all your industrial requirements. Our extensive product line includes everything from pipes and fittings to pumps, valves, and expansion joints. We also offer specialized services, such as project management, technical support, and maintenance.

With our deep industry expertise and strong partnerships with leading manufacturers, we can deliver innovative and cost-effective solutions to our customers. Our dedicated team of professionals is committed to understanding your specific needs and providing solutions that meet your requirements.

Our Partners



Product Range

Toraflex Expansion Joints

Toraflex offers a range of high-quality rubber and metal expansion joints designed to absorb thermal expansion and vibration in piping systems. These flexible connectors ensure the longevity and reliability of pipelines, preventing damage and leaks.

Rubber Expansion Joints



S10 Single Sphere
Expansion Joints



S15 Single Sphere
Expansion Joints



S20 Double Sphere
Expansion Joints



S30 Threaded unions
Expansion Joints

Metal Expansion Joints



Toraflex S25



Toraflex S50

Uniflow Valves and Strainers

Uniflow offers a wide range of high-quality valves and strainers, including ball valves, gate valves, globe valves, check valves, and filters. These products are designed to control fluid flow, prevent backflow, and remove contaminants, ensuring optimal performance and reliability in various industrial applications.

Ball Valves



Floating Ball Valve



Trunnion Ball Valves

Globe Valves



Cast Products



Forged Products

Globe Valves



Cast Products



Forged Products

Swing Check Valve



Cast Products



Forged Products

Lift Disc (Piston) Check Valve



Cast Products



Forged Products

Y- Strainers



Cast Products



Forged Products

Rice hydro Pumps and Its Types

Rice Hydro & Other Pumps: A diverse range of pumps, including electric series, high-pressure pneumatic, and manual hand-operated hydrostatic test pumps.



Electric Series



High Pressure Pneumatic



Manual Hand Operated
Hydrostatic Test Pumps

Tools and Equipments



Norbar

Norbar is a renowned brand specializing in high-quality torque tools, including torque wrenches and torque multipliers. Their products are used in various industries to ensure precise and accurate tightening of bolts and nuts.

Wren

Wren is a leading brand in the field of industrial tools and equipment. They offer a wide range of products, including wrenches, spanners, and other hand tools, designed to meet the needs of professionals in diverse industries.



Tube Expanders

Tube expanders are specialized tools used to expand the end of a tube into a tube sheet or fitting.



Pipes and Fittings

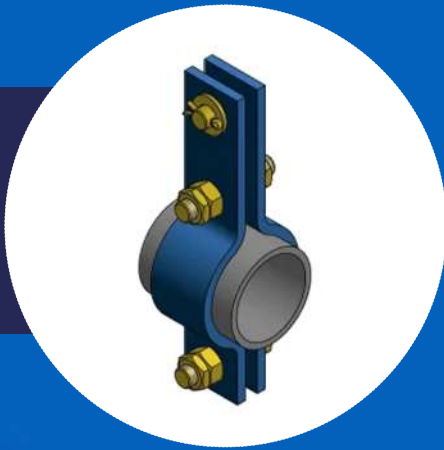
A comprehensive range of pipes, fittings, and gaskets to meet your piping system requirements.



Pipeline Products

Pipeline Products are essential components for the construction, maintenance, and repair of pipeline systems. These products include pipe supports, hangers, clamps, and other accessories that ensure the integrity and longevity of pipelines.

- Pipe Hangers & Supports
- Pipe Cutting and Beveling Machines
- Expansion Joints:
- Dismantling Joints:



Braided Hoses

Braided hoses are flexible tubes reinforced with braided layers, enhancing their durability and pressure resistance. They are widely used in various industries for fluid transfer applications, offering flexibility, reliability, and resistance to abrasion, chemicals, and temperature extremes.



CONTACT US TODAY!

We understand the importance of reliable partners in today's competitive industrial landscape. Let Inset be your one-stop shop for all your industrial needs.

Reach Out:

 Inset, P.O. Box 236663, Dubai, United Arab Emirates

 +971 502 13 1900  info@insetme.com  insetme.com

